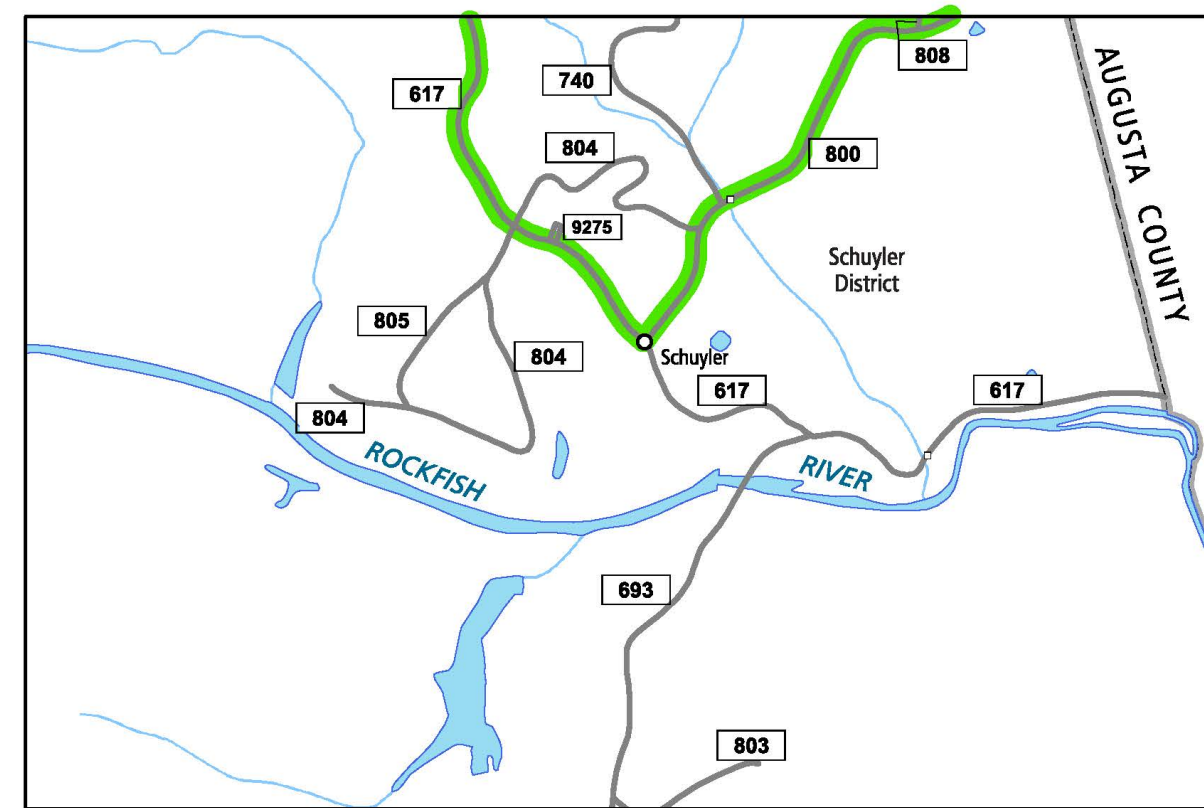
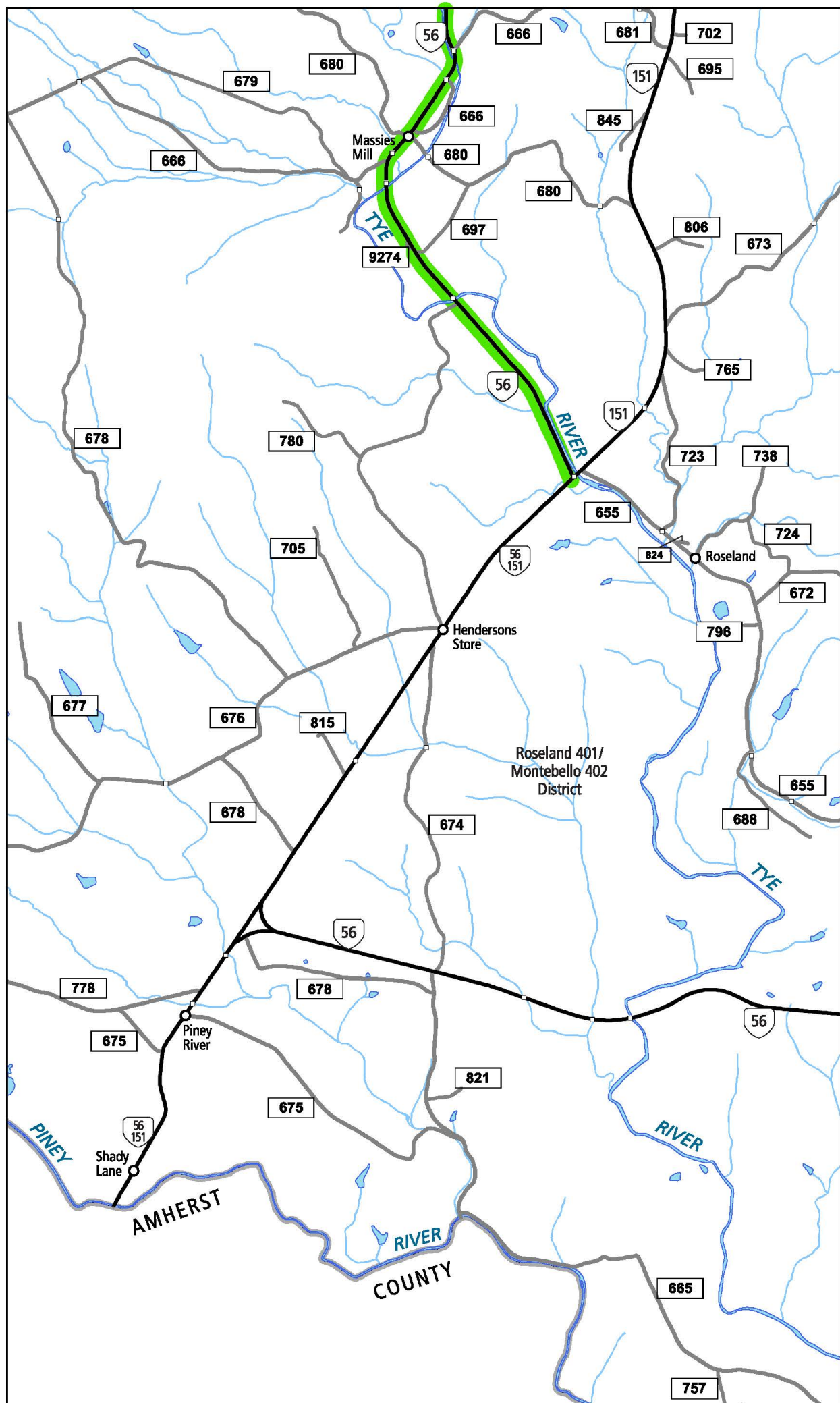


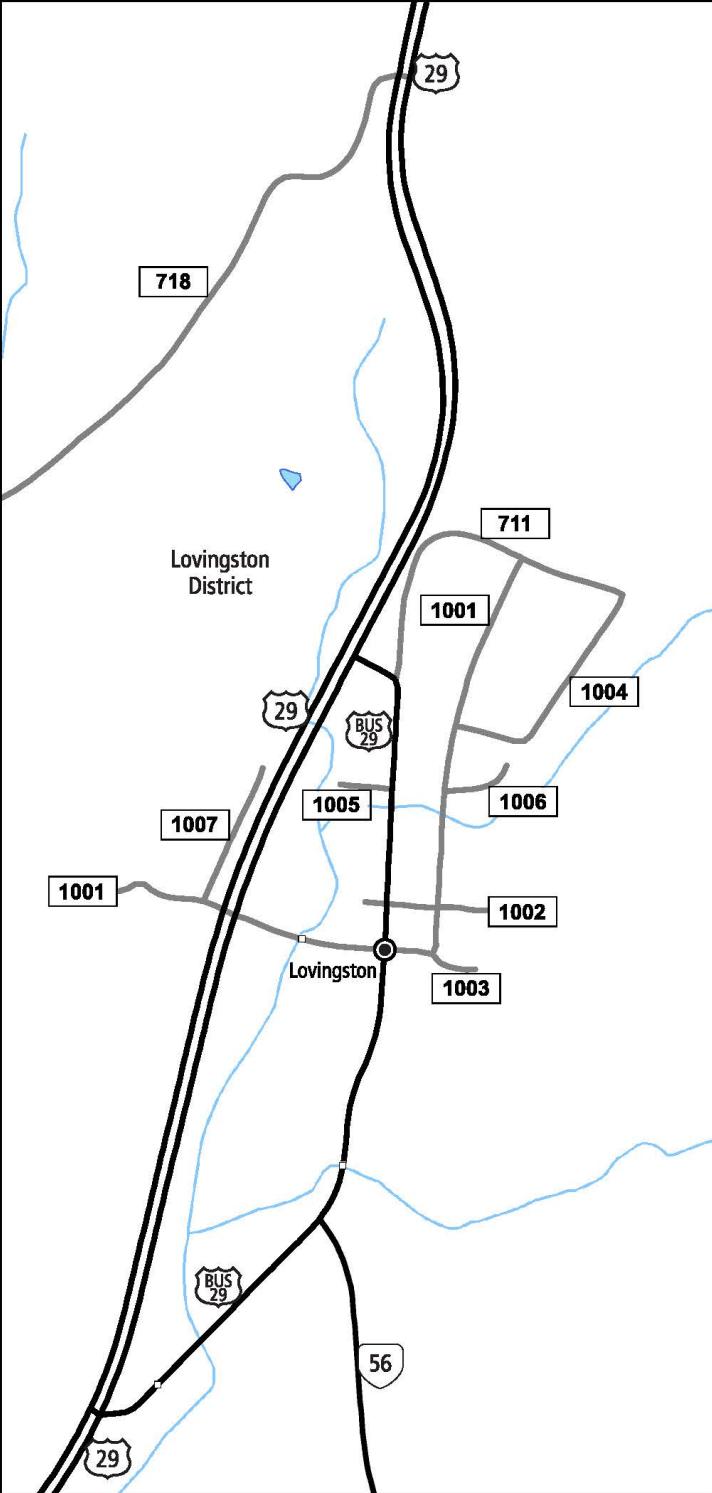
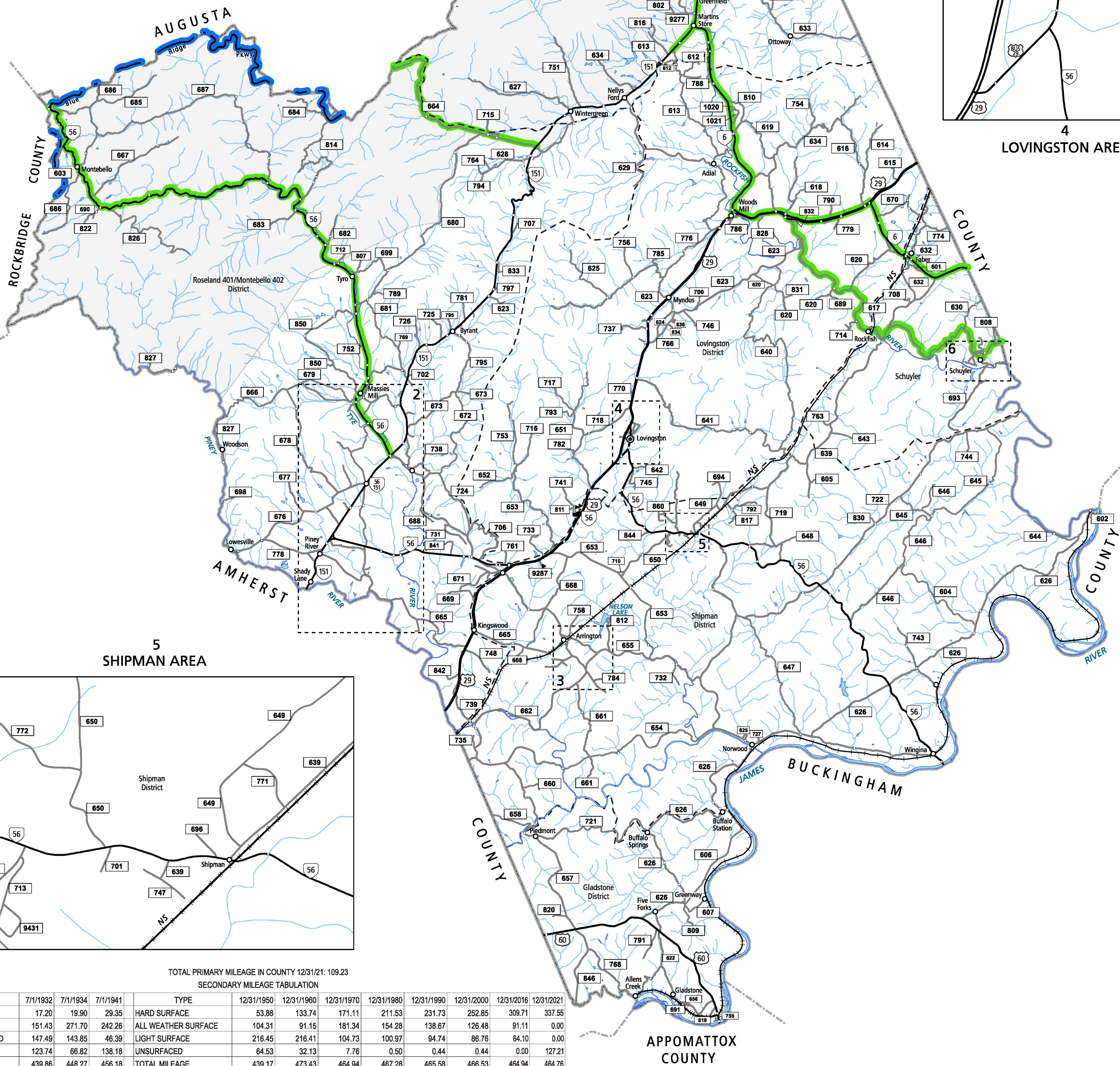
1 AFTON AREA



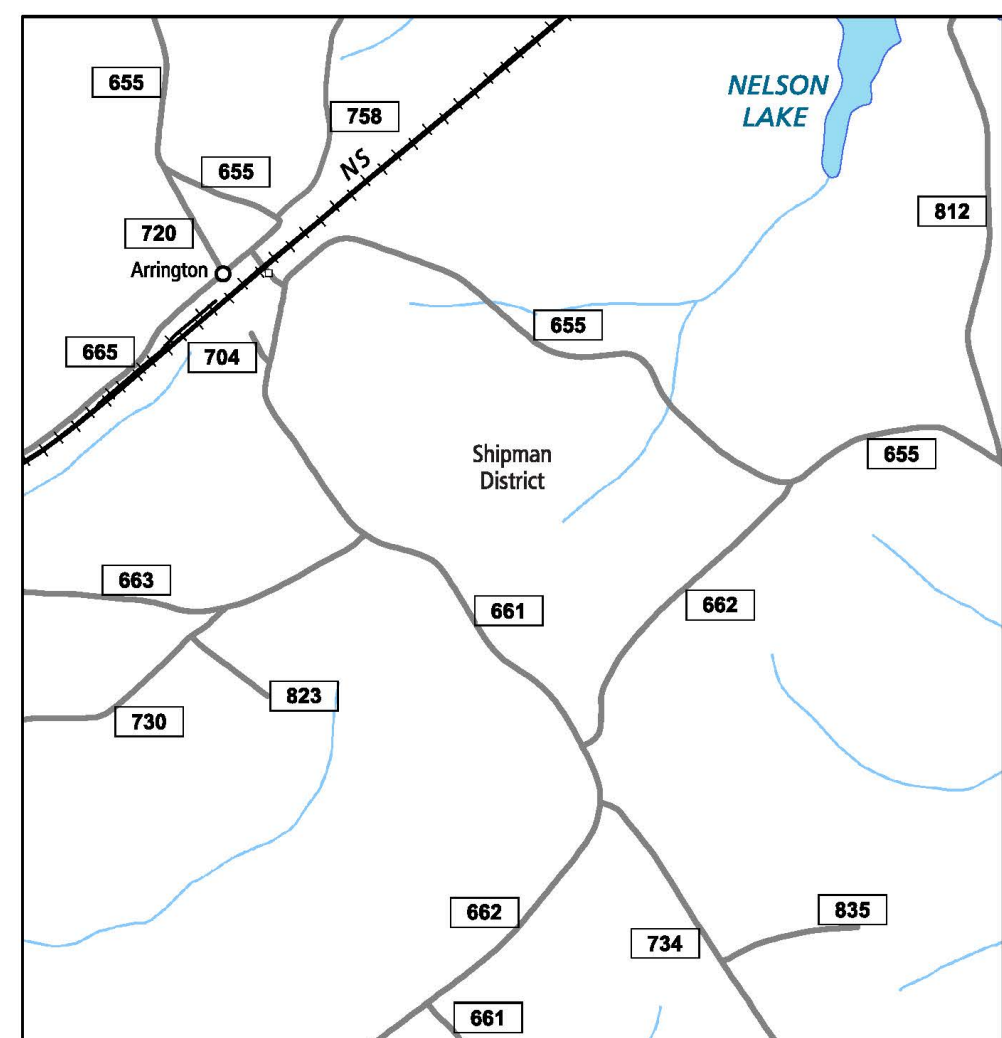
6 SCHUYLER AREA



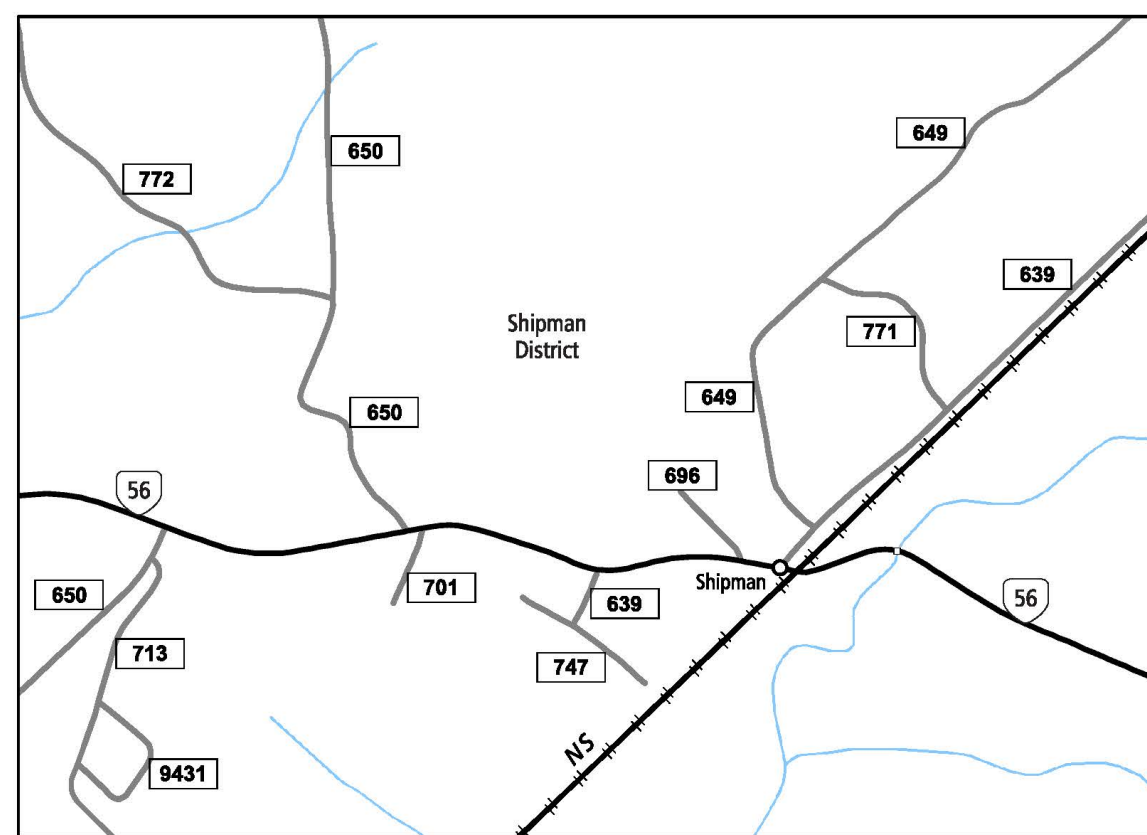
2 MASSIES MILL & PINEY RIVER AREA



4 LOVINGTON AREA



3 ARRINGTON AREA

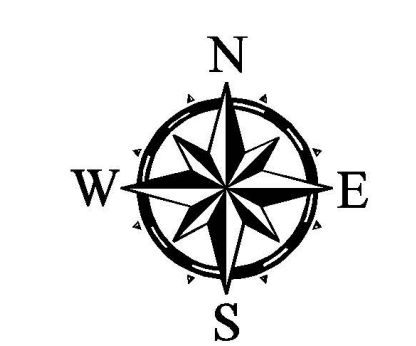


5 SHIPMAN AREA

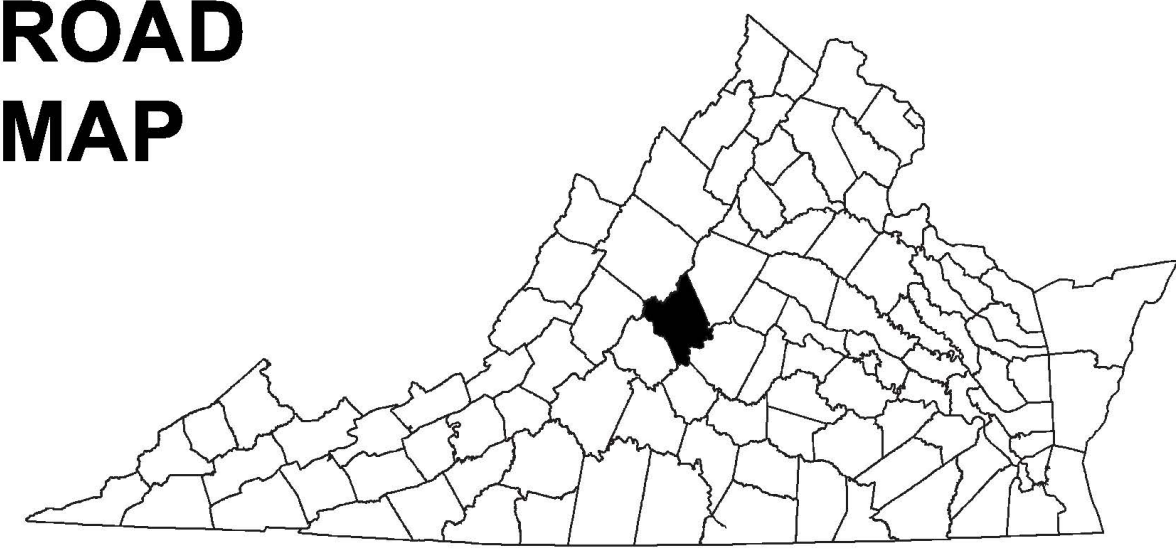
TOTAL PRIMARY MILEAGE IN COUNTY 12/31/21: 109.23  
SECONDARY MILEAGE TABULATION

TYPE	7/1/1932	7/1/1934	7/1/1941	TYPE	12/31/1950	12/31/1960	12/31/1970	12/31/1980	12/31/1990	12/31/2000	12/31/2016	12/31/2021
BIT SUR. PAVED	17.20	19.90	29.35	HARD SURFACE	53.88	133.74	171.11	211.53	231.73	252.85	309.71	337.55
GRAVEL, SOIL, ETC.	151.43	271.70	242.26	ALL WEATHER SURFACE	104.31	91.15	181.34	154.28	138.67	126.48	91.11	0.00
GRADED & DRAINED	147.49	143.85	46.39	LIGHT SURFACE	216.46	216.41	104.73	100.97	94.74	86.76	64.10	0.00
UNIMPROVED	123.74	66.82	138.18	UNSURFACED	64.53	32.13	7.76	0.50	0.44	0.00	0.00	127.21
TOTAL MILEAGE	439.86	448.27	456.18	TOTAL MILEAGE	439.17	473.43	464.94	467.28	465.58	466.53	464.94	464.76

NELSON COUNTY, VA



COUNTY ROAD MAP



NELSON COUNTY

ROAD CLASSIFICATIONS		MISCELLANEOUS	
	Frontage Road		Schools
	Secondary Route		Seaports
	State Route		Park_RideLots
	U.S. Route	<b>AIRPORTS</b>	
	Urban Road		Commercial
	LightSurface		General
	DividedHwyInterstate		Military
	AllWeatherSurface	<b>RAILROADS</b>	
	Unsurfaced		Metro
	otherSurface		VARailroads
	BikeRoutes		Park_N_Ride
	AppalachianTrail	<b>BOUNDARIES</b>	
	Scenic Roads		MilitaryAreas
			MagisterialDistricts
			Incorp_Areas
			Natural_LandCover

Additional ROAD CLASSIFICATION (Post 2019)  
Hard-surface

The accuracy or completeness of this map is not guaranteed or warranted.  
Map depicts state-maintained highway network as of May 1, 2021.  
Copyright © 2021 by Commonwealth of Virginia  
Department of Transportation, All Rights Reserved

AN INVENTORY OF STATE MAINTAINED ROADS