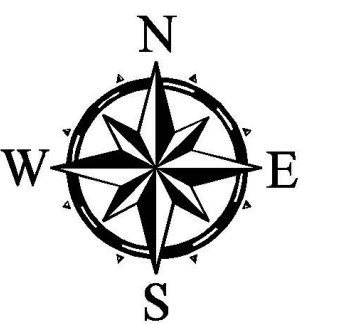
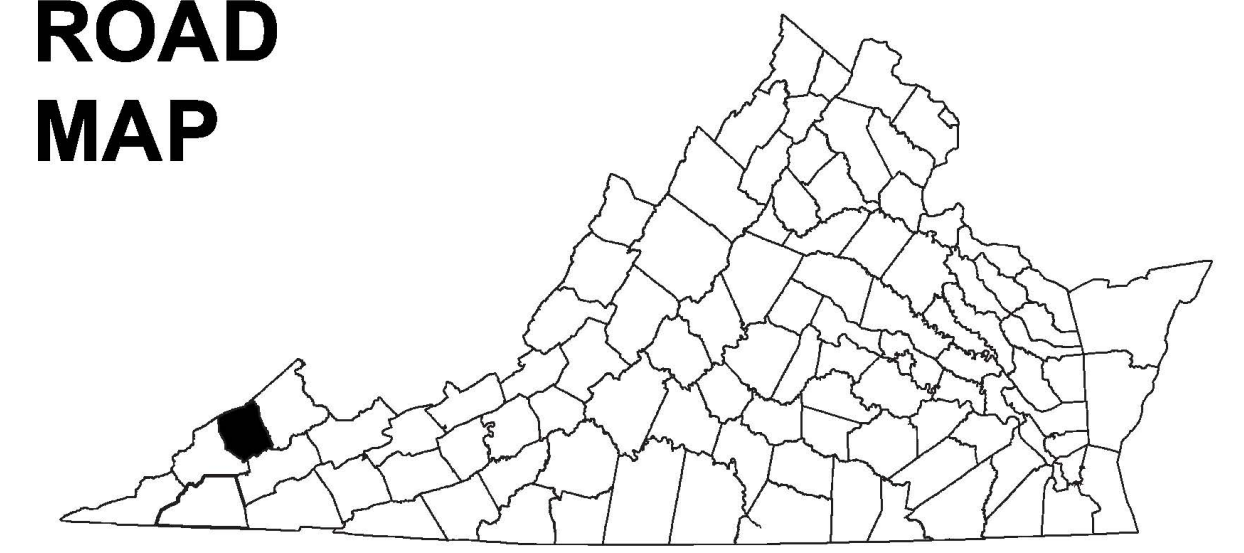


DICKENSON COUNTY, VA



COUNTY ROAD MAP



DICKENSON COUNTY

ROAD CLASSIFICATIONS

- Frontage Road
- Secondary Route
- State Route
- U.S. Route
- Urban Road
- LightSurface
- DividedHwyInterstate
- AllWeatherSurface
- Unsurfaced
- otherSurface
- BikeRoutes
- AppalachianTrail
- Scenic Roads

MISCELLANEOUS

- Schools
 - Seaports
 - Park_RideLots
- AIRPORTS**
- Commercial
 - General
 - Military

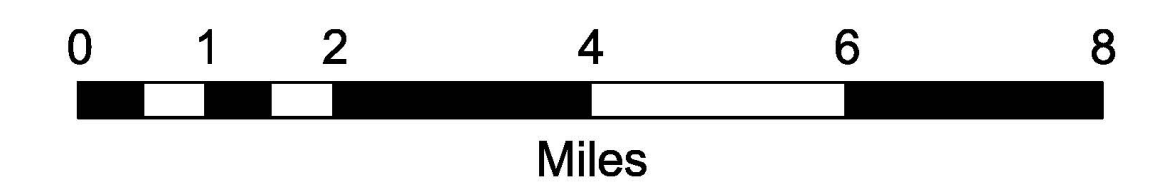
RAILROADS

- Metro
- VARailroads
- Park_N_Ride

BOUNDARIES

- MilitaryAreas
- MagisterialDistricts
- Incorp_Areas
- Natural_LandCover

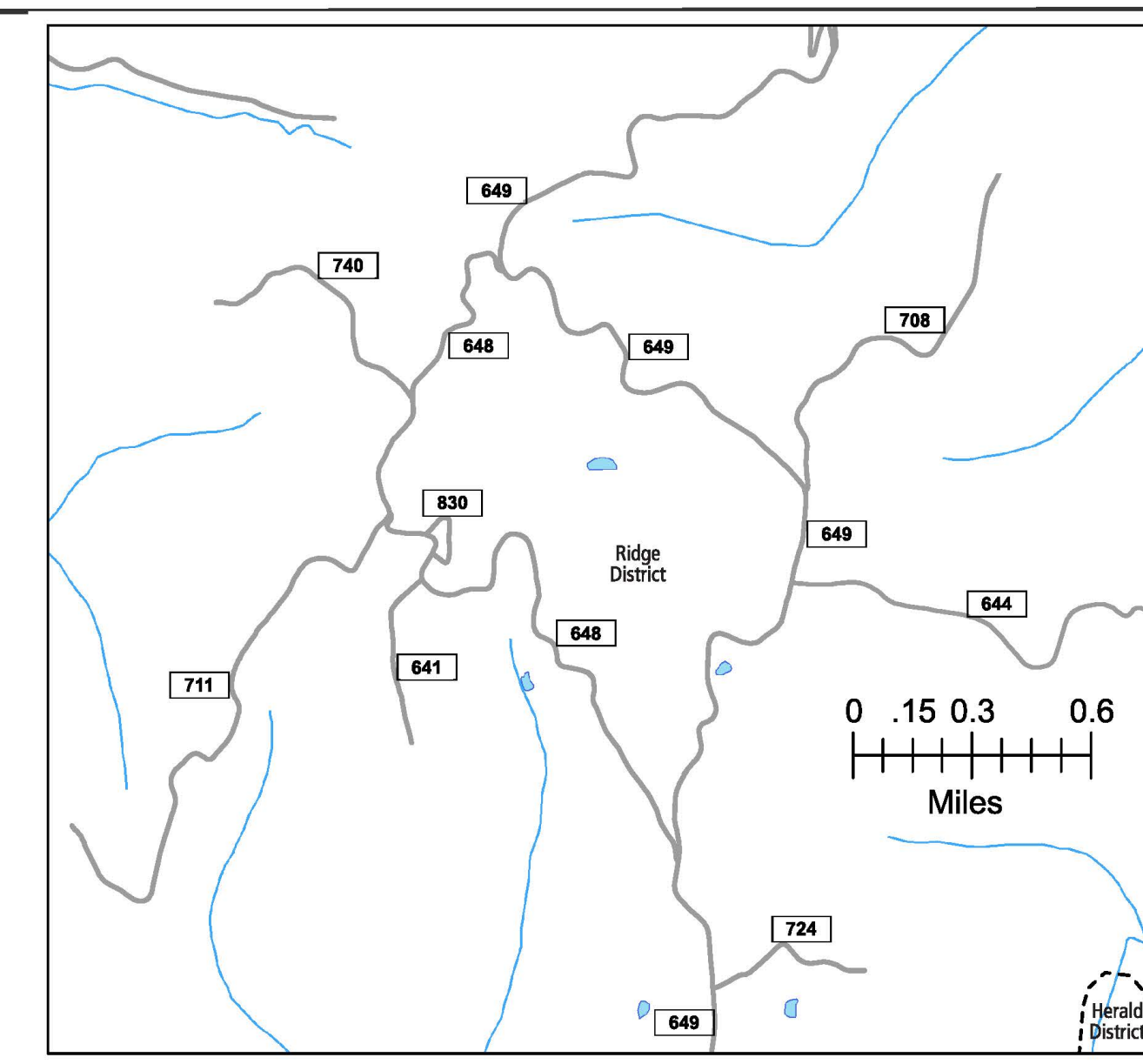
Additional ROAD CLASSIFICATION (Post 2019)
Hard-surface



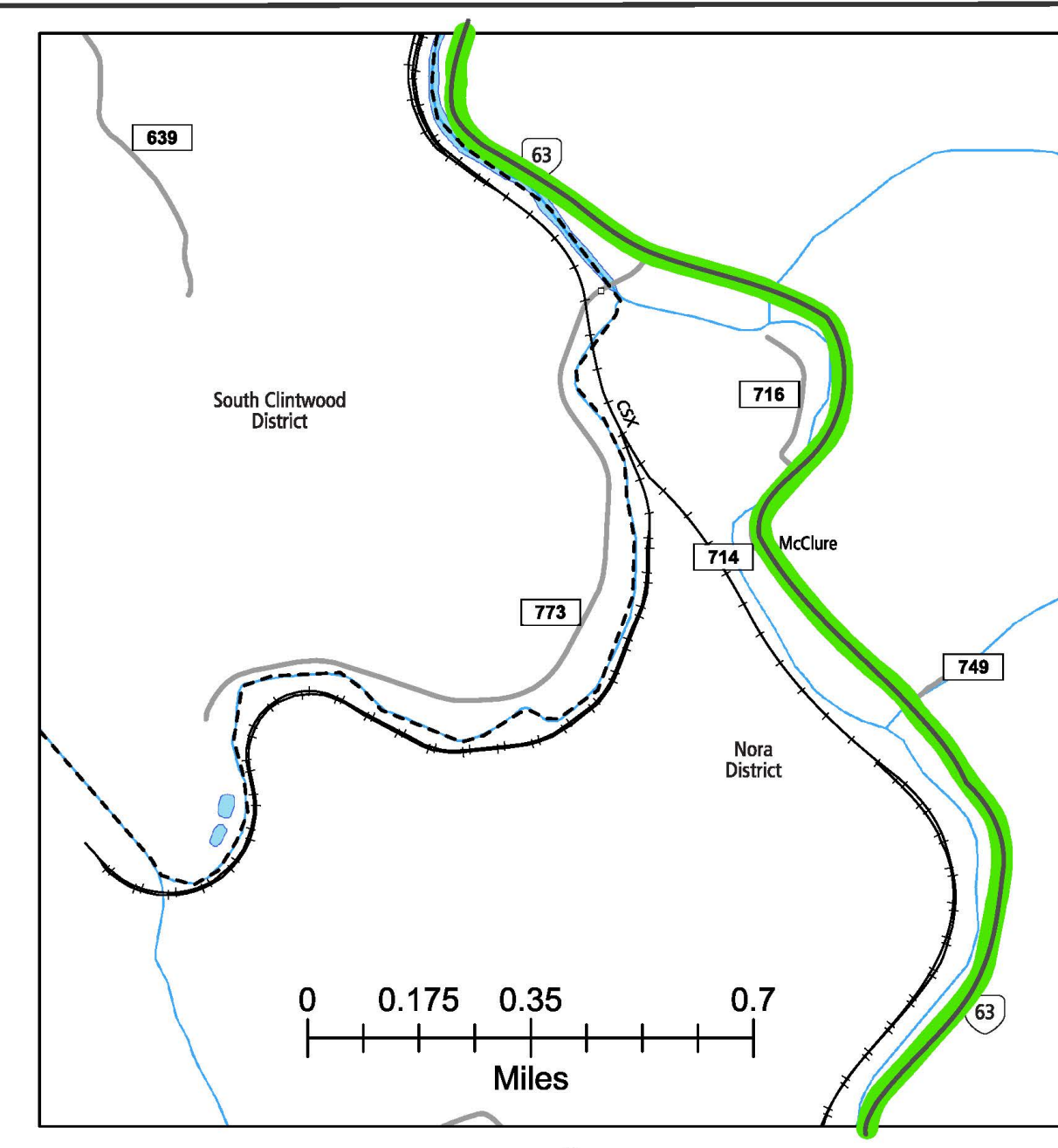
The accuracy or completeness of this map is not guaranteed or warranted. Map depicts state-maintained highway network as of May 1, 2021. Copyright © 2021 by Commonwealth of Virginia Department of Transportation, All Rights Reserved

AN INVENTORY OF STATE MAINTAINED ROADS

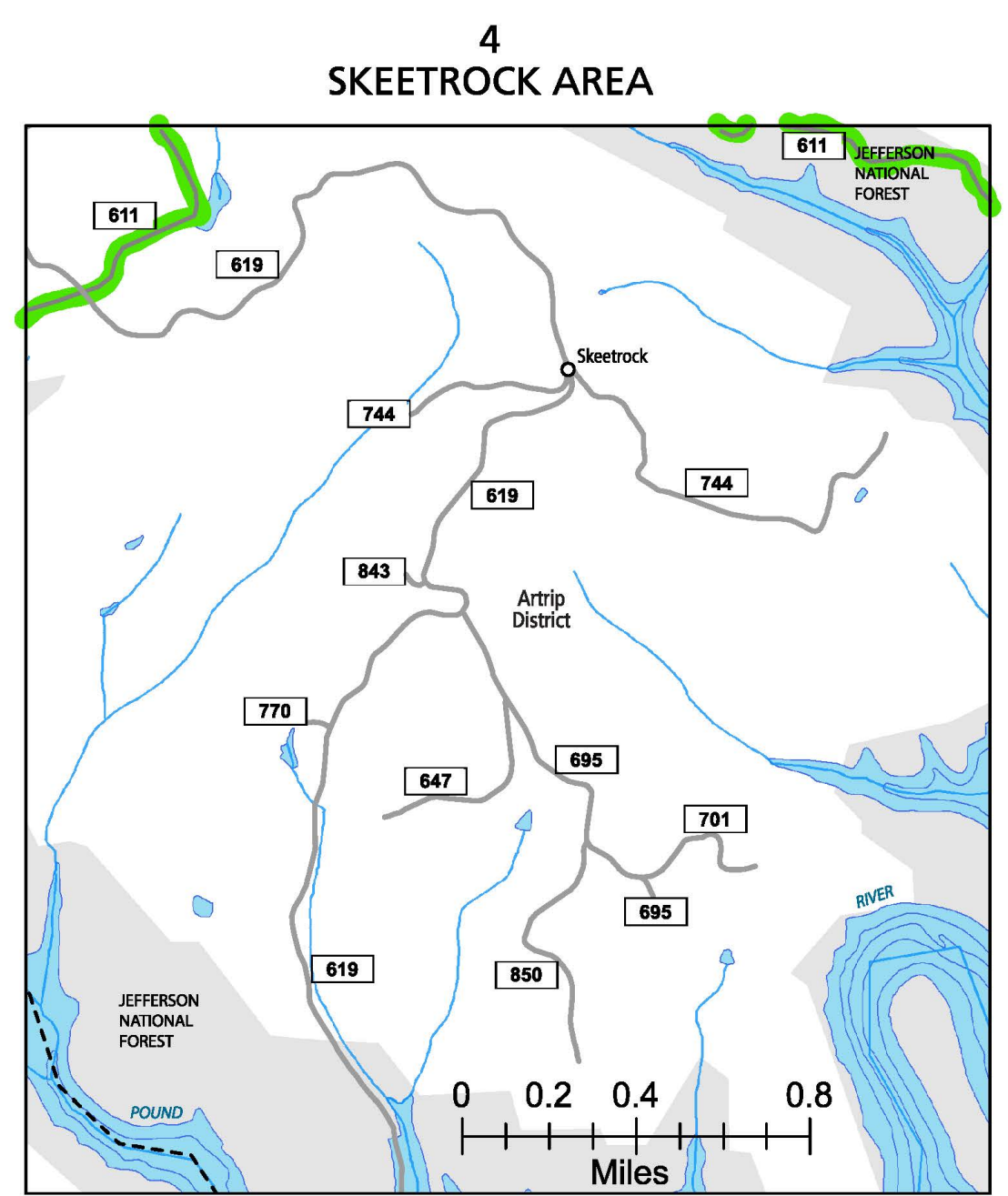
TYPE	7/1/1932			7/1/1941			7/1/1970			7/1/2021		
	1932	1941	1970	1932	1941	1970	1970	1980	1990	2000	2018	2021
BIT SUR_PAVED	1.50	2.25	4.64	26.10	70.83	120.55	146.42	289.43	360.09	387.49	387.52	
GRAVEL_SOIL_ETC.	0.00	24.55	90.39	141.63	246.28	209.48	201.36	100.17	38.25	18.34	0.00	
GRADED & DRAINED	56.90	163.80	148.47	59.09	15.57	40.64	36.50	7.88	4.41	0.00	0.00	
UNIMPROVED	248.70	188.66	130.42	180.10	55.17	0.72	0.00	0.00	0.00	0.00	18.34	
TOTAL MILEAGE	307.10	359.26	373.92	386.92	387.85	371.39	384.28	397.48	402.75	405.83	405.86	



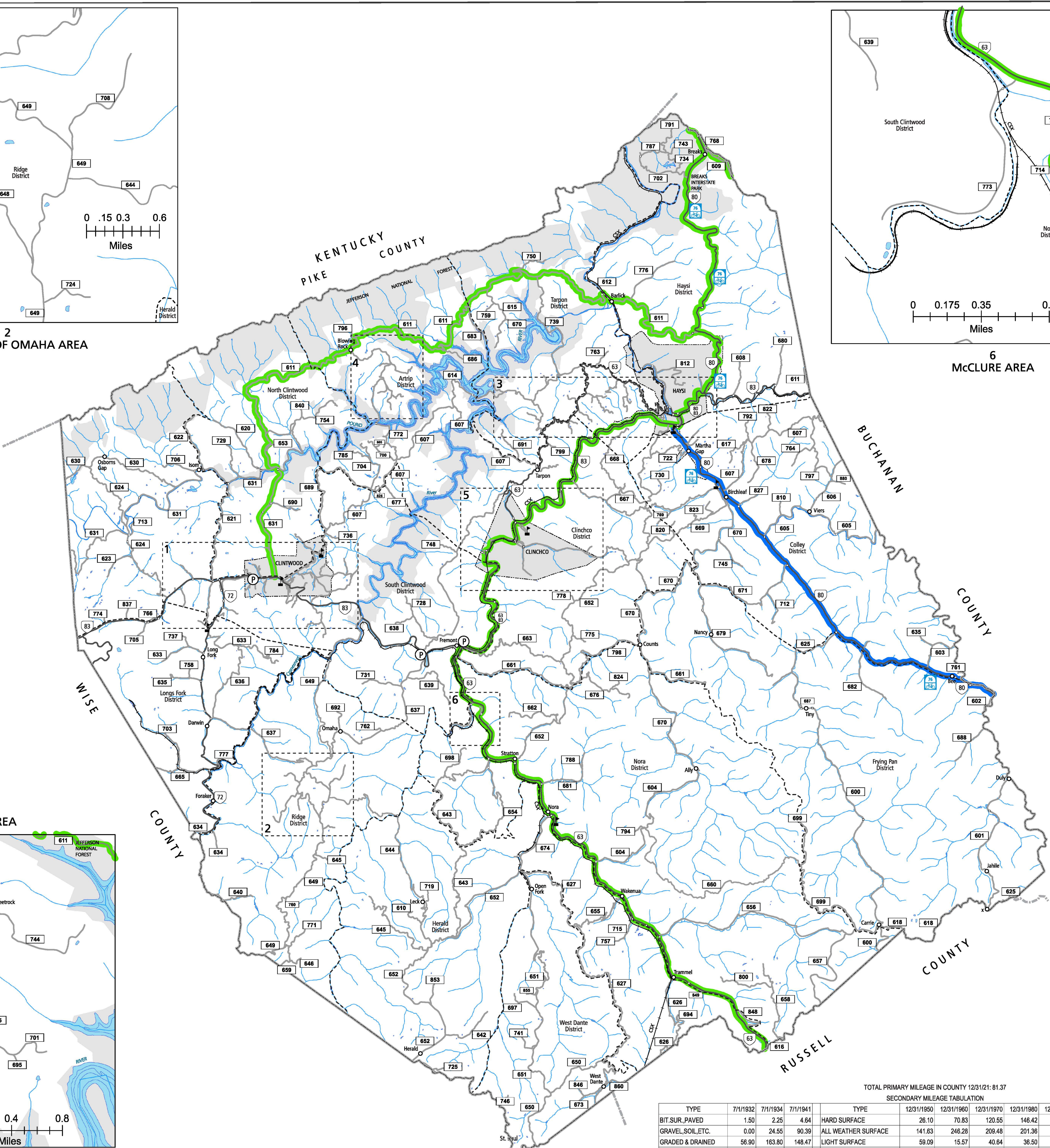
2 SOUTHWEST OF OMAHA AREA



6 McCLURE AREA



4 SKEETROCK AREA



TOTAL PRIMARY MILEAGE IN COUNTY 12/31/21: 81.37

SECONDARY MILEAGE TABULATION

TYPE	12/31/1950	12/31/1960	12/31/1970	12/31/1980	12/31/1990	12/31/2000	12/31/2018	12/31/2021
HARD SURFACE	26.10	70.83	120.55	146.42	289.43	360.09	387.49	387.52
ALL WEATHER SURFACE	141.63	246.28	209.48	201.36	100.17	38.25	18.34	0.00
LIGHT SURFACE	59.09	15.57	40.64	36.50	7.88	4.41	0.00	0.00
UNSURFACED	180.10	55.17	0.72	0.00	0.00	0.00	0.00	18.34
TOTAL MILEAGE	386.92	387.85	371.39	384.28	397.48	402.75	405.83	405.86