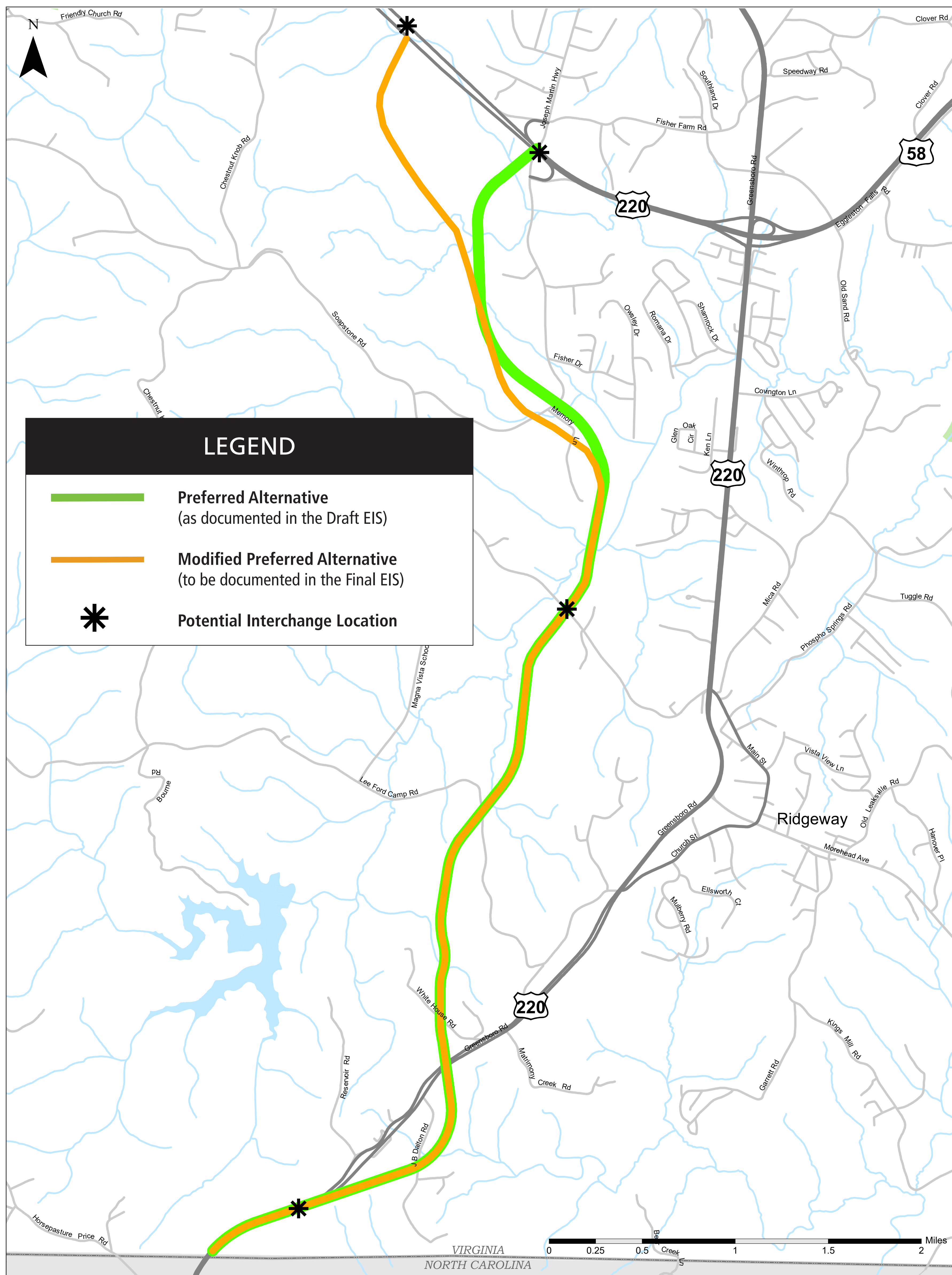


Martinsville Southern Connector Study

Route 220 Environmental Impact Statement

MODIFICATIONS TO THE PREFERRED ALTERNATIVE



The Commonwealth Transportation Board (CTB) approved Alternative C as the Preferred Alternative on January 15, 2020, and directed VDOT to further analyze Alternative C to evaluate whether adjustments can measurably reduce impacts to properties, as requested by Henry County, and still result in a permissible project.

VDOT has modified the Preferred Alternative to accommodate the CTB's direction, as indicated by the orange line on the map. These modifications satisfy the Purpose and Need of the study while resulting in fewer property impacts and no additional wetland or stream impacts.

The Preferred Alternative will be documented in the Final EIS and a Joint Permit Application (JPA). The JPA was submitted to the permitting agencies in July 2020 and the Final EIS is scheduled to be issued by FHWA and VDOT in Late 2020. These documents will include updated costs and impact estimates for the Preferred Alternative.